



From the County Commissioner

It's been a whirlwind first few weeks in my new role as Leicestershire County Commissioner.

I've visited camps and AGMs, travelled to Waddow for our county weekend and talked and talked to so many leaders and girls around the county. Girlguiding in Leicestershire is thriving. It's a huge, living, breathing organisation that is constantly creating opportunities for girls and young women. Every day I get to hear about someone or something new. It's so exciting to be part of that.

We are now into the time of the Leicestershire in action challenge. There are units, Districts and Divisions coming up with exciting, innovative and fun ways of promoting the wide range of opportunities in guiding. Don't forget to email the details of your event or idea to website@leicestershireguides.org so it can be put on the map on the website.

Enjoy the rest of the summer term - the outdoor games, hikes, fundays and camps. It's great to see your photos and hear your stories. I look forward to meeting even more of our members around the county as I travel round in the next few weeks and months.

Rachel Webb-Jenkins

South Division first to sleepover at new Richard III Centre



South Division became the first ever group to sleepover at the Richard III centre.

Girls took part in Medieval craft activities including soap making, book mark printing, making a medieval tile and weaving a bracelet.

A town trail took in the relevant historical points in the city that were part of the Richard III story, and a tour of the cathedral gave the opportunity to view the new tomb of Richard III.

Girls also enjoyed exclusive access to the exhibitions in the Visitor Centre, a meal in the centre café and a "campfire" sing song, before bedding down for the night in the galleries.

Last Chance to Order Badges



The hugely successful Richard III challenge is nearing its end. Units across the county have enjoyed rolling out marzipan fruit, creating their own coat of arms and playing medieval games. Last orders for badges must be made by 31st July. Any units planning to try the Richard III challenge in the Autumn term must order their badges before 31st July. The [order form](#) is available from the [website](#).



New Units to open following recruitment day in Charnwood



On Saturday the 18th April, Charnwood Division held events in Syston and Barrow to attract potential new adult volunteers. Banners and information leaflets were on hand, as well as Leaders ready to chat about each section, with refreshments and home made cake ready to provide a warm welcome.

The events were well attended, having been advertised via a banner at the venue, a spot on BBC Radio Lecester, articles in village magazines and local newspapers and posters around each village. Invitations had

also been sent to the parents of girls on waiting lists in the area, and on the day volunteers hit the high streets with fliers.

Division Commissioner Susan Round said “We had a lot of interest - we signed up four volunteers on the day and have sent out a further three welcome e-mails to others who expressed an interest on the day. This has meant a new Rainbow Unit is now opening in Barrow - hopefully in September. We’re also hoping to open a new Brownie Unit in Mountsorrel too”.

Acknowledging the amount of work that had gone in to organizing and running the events, Susan said “If you’re wondering if its worth doing- yes- make it happen!”

Girls complete Baden Powell Challenge

19 amazing young ladies attended this weekend, where they were challenged to produce a resource to help Rachel Webb Jenkins, the new County Commissioner, and her team to grow guiding. By Sunday afternoon the girls had produced a pack that will offer ideas and guidelines to leaders about publication and ideas to attract girls and leaders. The pack will be emailed out to all Division commissioners and leaders of the units the girls came from.

The girls suggested a photo bank of images that could be used within press releases and publicity material. The girls have started this and ask for your help in keeping it going. If you are organising an event or doing something interesting within the unit there are always photo opportunities, so snap away and send the best ones into county office.



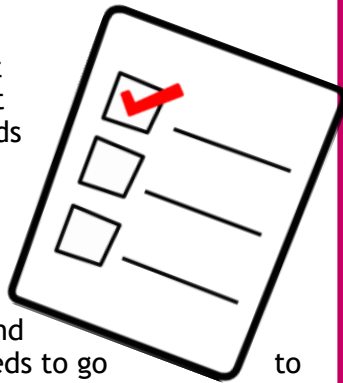
As well as completing their adventure weekend the girls were awarded their PR star badges.



Residential Team News

Planning Residentials

Please remember that your Residential Event Notification form needs to be sent in at the beginning of your planning process (or at least as soon as you know the numbers attending) and not at the end ! It needs to go to both your District Commissioner and also your Residential Adviser and you should check that you have their permission to go ahead before you make too many plans.



Residential Mentor Requests

Please remember that if you do not hold a Going Away with licence and are planning to take the girls away you need to request a mentor. You should do this **as early as possible** in order to ensure you can be given the best support and guidance.

In addition, if you already hold a licence but are planning on doing an additional module you also need to request a mentor so that you can be supported and relevant checks conducted.

The request form is:

- In the front of the Going Away with book if you purchase it from the Leicestershire shop
- [On the Girlguiding Leicestershire website under downloads](#)
- From County office
- Direct from Janet Gelsthorpe - jgelsthorpe@greenfield.leics.sch.uk

It is far easier to sort mentors in advance than the week before the event is supposed to happen! Please help us to help you.



Senior Section Permits

As we are now in prime Camping season, could we remind everyone that girls planning on doing their Senior Section Permit or Overnight Permit do need to find someone to act as an assessor at the BEGINNING of the planning process .

The assessor needs to be an experienced Going Away With Licence holder- NOT the girls' unit leader- and hopefully she will be available to act as a mentor throughout the planning stages if needed, be available to visit the event and will sign off the assessment record.

This doesn't need to be the Division Residential Adviser but in practice, she should be the first port of call as she will have a list of people who can help. She will also keep the County team informed which is important because the finished records need to be sent in to County office for verification in exactly the same way as Going away with Scheme applications are.

Get in touch

If you have any queries please contact any of the County Residential team:

Janet Gelsthorpe—Residential Coordinator

Seonaid McPhail— Guides and Senior Section

Melanie Wakley—Brownies

Jenny Parker—Rainbows.



Residential Team News continued...

Home Contacts

These should be in place whether you are merely going out of the unit meeting place or away on a residential.

The Guiding manual clearly states:

“It is important that you invite someone to be the home contact to act as the first point of call if plans change, or an accident or emergency occurs... The home contact should be a responsible adult who is not related to any member of the party.”

The Going Away with Guiding book adds:

“If an emergency at home means that parents need to contact a participant, they should call the home contact, who will pass the information to the event coordinator so she can provide the required support to the participant. Ensure parents know the home contact should be used in emergencies only.”

Whilst many people give their mobile phone numbers to parents and carers it is important to remember that in the above circumstances it is better to ask them to contact the home contact rather than yourselves. Why?

- What if you have an anxious parent who rings every half an hour to check their child is ok?
- What if you lose signal or have a intermittent signal where you are?
- What if there is a major incident and you need to keep your communication channels open for emergency services?
- What if you are overseas and miss a connecting flight talking to a parent?

Here are just a few examples - but, if you have an experienced, calm, sensible and responsible person acting as your home contact - life is so much easier for the leadership team actually running the event.

We totally understand the reason for giving out personal mobile numbers for parents to contact you especially when away, but it's really important that all of us follow the guidance from Girlguiding and firmly **DO NOT** encourage parents to get in touch directly when actually on an event with girls.

For further information please see the Guiding Manual, activities section, under “Additional Information” and then “Home Contact “ and “Emergency Procedures”.

Minifig Madness

Deanna Lavelle and a 2nd Oadby Trinity Rainbow having a good time at Swithland Woods. The minifigs were an Easter gift and have already had great fun in and outside the unit.



Guides get arty in local community

68th Leicester Guides supported Leicester Animal Aid as their community action in the spring term. We collected items useful to the centre and filled collecting boxes with spare coins.

Then we spent a day painting a mural to brighten up an outside pen at their rescue centre in Huncote. The design, done by our young leader, was drawn out and everyone helped with the painting. It was a cold day and a small space so teamwork and commitment were needed to complete the task.

Everyone had a great time and we were very proud of the finished picture.



News from Guiding Essentials Shop

Summer closure

The shop will close for the summer holiday after business on Saturday

4th July. On Saturday 22nd August the shop will be open from 10am to 1.30pm for Leaders to purchase resources for the Autumn term. Normal shop opening times will resume on Tuesday 1st September.

Badge celebrating Queen Elizabeth's Reign

On 10th September Queen Elizabeth II becomes the longest reigning

British monarch. To mark this occasion a badge will be available. Woven and metal. These will be available in September and orders are being taken now.



Historic Uniforms Collection

We have a small number of uniforms of the style the Queen would have worn as a Guide and also a Sea Ranger Uniform of Princes Margaret's era.

In addition a copy of the book "Royal Guides" may be borrowed together with pictures of the Queen as a Guide. Details of how to book these and other Historic Uniforms can be found in the [latest Equipment Hire booklet- which is now available online.](#)

Chief Commissioner's Award 2015

You are reminded that completed nomination forms should be emailed to Maggie Silver maggie.silver@outlook.com, or posted to County Office marked for Maggie's attention - to arrive no later than Sunday 7 June please.

This award is for outstanding service to local guiding by an active adult volunteer who holds an appointment at Unit level. An individual may be recommended by anyone inside or outside of guiding but the nomination form must be signed by the appointing Commissioner and the County Commissioner.

Further Information about the award/the nomination form is available from Maggie. The form is also available from your Commissioner or can be [downloaded from the Girlguiding Midlands website.](#)

We look forward to receiving your nominations for those special people in your area who are worthy of recognition for their contribution to guiding at a LOCAL level.

TOPSTONES

We have a County Booking during the day on **26th September**, but the Chalet will be available from late afternoon and all day on Sunday 27th.

If you would like to book the Chalet for one night for a sleepover for your Rainbows, Brownies or Guides, please contact Pam Gilbert as soon as possible by emailing pam@gilbert2.plus.com



Join the Team

Are you a Brownie, Guide or Senior Section Leader? Or are you a Young Leader or Ranger?

Are you free on Sunday 14 June? We need your help!

ROAR

We've had lots of bookings for our exciting Rainbow Activity Day and we need lots of people to come along with a smile to help make the day run

really smoothly. You need to arrive at Topstones by 9am with a packed lunch and a camp chair. We'll provide tea, coffee and squash for you all day! We hope to be finished by 3pm.

Waste, Water and Me Day

Why not make a weekend of it? We also need help on Saturday 13 June with the Guide Waste Water and Me Activity Afternoon and Campfire.



Stay Overnight

Let us know if you want to stop overnight (adults only). More details included costs are on the [booking form](#).

Book on to the Staff Team

To book in on the staff team, please complete the [booking form](#) and return it to Janet Gelsthorpe, including your cheque, to the address or email on the form, no later than 31st May 2015. Confirmation of your booking will be sent via email.

County Rainbow



Residential Practice

At Hayfields, Market Harborough

5th /6th December 2015

Cost £22.00 per Rainbow

£5.00 per Leader to cover food

This is a residential for a Rainbow Leader with little or no residential experience to bring 3 Rainbows with them. You will be able to get a feel of a residential and gain some experience. Places are limited.

Further details contact Jenny on 0116 2866955 or jenniferparker@fsmail.net

ROAR

Update

FAQs for Rainbow Roar are now [available to download](#) from the [Girlguiding Leicestershie website](#).



Queens Guide Award Drop In

The next Queen's Guide Award drop in will be at County Office on 10 June 2015 from 6–8pm.

This is a chance for those who are either interested in doing the award or working on it to meet County Queens Guide Award Advisor

Appointments

Alison Cross—Coplowl District Commissioner



Senior Section Forum

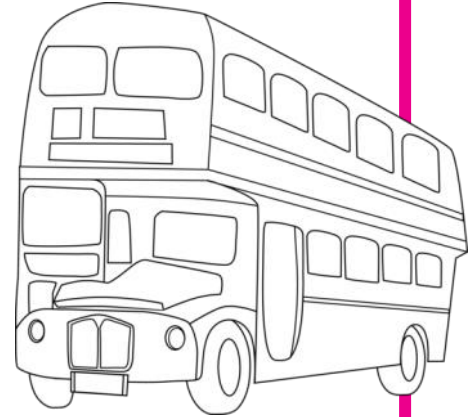
The latest meeting of the Senior Section Forum was hosted on 22nd April by Oadby & Wigston Focus Senior Section unit. 14 members of the Senior Section from two different divisions attended and the task for the evening was to plan a county Senior Section event for the autumn term. Ideas suggested were a picnic in the park, ice skating, a BBQ and a paint fight disco!

The Forum split into small groups to work on each idea, and at the end each group did a Dragons' Den-style pitch to the rest of the Forum explaining why their idea was best. A vote was held to decide the best pitch, and a prize was awarded to the ice skating team as their pitch was agreed to be the best - the group delivered it while "ice skating" around the room!

Another vote was held to decide the best event idea, and the Senior Section team are now

starting to plan the event based on this decision - look out for more information at the start of the autumn term to see what it will be!

New names for the Senior Section Forum were discussed, and everyone agreed to rename it to The Discussion Bus (as the meetings move round the county). The Discussion Bus will be coming to a new location in the autumn term, and details of the date and venue will be announced in September.



Did you make it to the Staff Showcase on May 9th?

No worries if you didn't - there are many opportunities to be a member of staff at Charnwood 2016!!

Keep checking www.charnwood.org for opportunities/information about registration.

If you have any questions about being on the staff, please email staff@charnwood.org

Don't forget that if you are an adult leader with a Rainbow or Brownie unit, or a parent/non-leader supporter, you don't have to miss out on the fun - your help at camp would be invaluable.

Your Scouting/Guiding friends from other counties/countries would also be welcome!!

Looking forward to seeing you there!

Youth Forum

Hi! We're Beck and Alex and we are the Girlguiding Leicestershire Youth Ambassadors for Charnwood 2016.

Charnwood 2016 is Leicestershire's International county Scout and Guide camp, which is held every five years. It will take place at Whatton House in Long Whatton. The planning has started for this wonderful camp which will be full of new experiences, meeting new friends and international adventures.

The Youth Forum discuss a variety of topics and items linked with Charnwood. At our meetings (as well as eating lots of biscuits), we talk about everything from the theme of the camp to what kind of activities you guys would want to see. We have had lots of great ideas!

We have also suggested designs for the badges, voiced what we want to see at the opening and closing ceremonies, spoken about what the subcamps should be called and what colour t-shirt's and neckers could be. Our latest discussion includes the camp song. What would you like it to be? Look out for the vote soon!

We want to get views from wider than just our forum so that Charnwood can have something for everyone! Join the discussion either by emailing youth@charnwood.org or follow @Charnwood2016 and use the hashtag #YF2016 on Twitter. This is your opportunity to make sure that you are heard.



Thank You

I just wanted to say a huge thank you to everyone who was at the Annual Review in April. It was lovely to see so many there as I handed over to Rachel. Thank you for all the lovely cards, flowers, messages and gifts, I can almost play a tune on my new trumpet!

I have had a wonderful five years as County Commissioner and would like to thank you all for your support and friendship.

Abi Salter

I just wanted to say Thank You for all the cards, flowers, presents and kind words I have received to mark the completion of my time as ACC, it has been an amazing 5 years with many new experiences and many mountain top moments. I am proud to be part of such a wonderful organisation and especially here in Leicestershire

Thanks

Gill Gates

Upcoming Trainings

Places must be booked in advance for all training. You can book using the form in the Bulletin or online [via the website](#).

Full First Response

Wednesday 27 May, County Office
10am - 4pm

First Response Renewal

Wednesday 17 June, Emmanuel Church Hall,
Forest Road, Loughborough
7pm - 9pm

Safe Space

Tuesday 9 June Thornton Community Centre,
Thornton
6.30–9.30 pm

Rainbow Leader Section Training Day

Saturday 21 November, Thornton Community
Centre
Times TBC

Brownie Leader Section Training Day

Saturday 14 November, Longslade
Times TBC

Guide Leader Section Training Day

Saturday 26 September, Topstones
10 am - 4pm

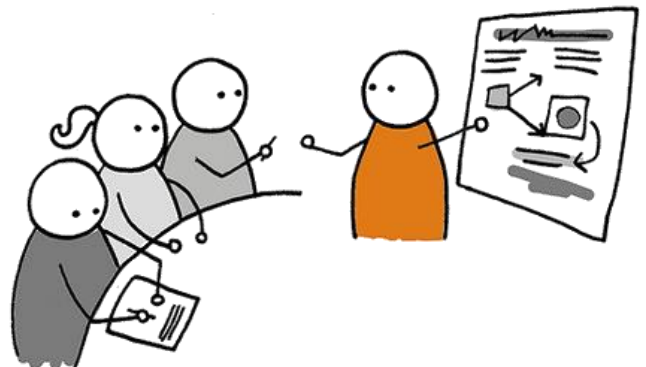
Senior Section Leader Section Training Day

Saturday 4 July, Venue TBC
Times TBC

Introduction to Leadership in Guiding

Trainings and workshops to give new Leaders skills and knowledge to assist in their role in Guiding. New Leaders keep these dates free and look out for an invitation coming soon.

Tuesday 1, 8, 15 and 22 September
County Office 10am - 4.30 pm
(Full First Response on Sunday 13 September)



Girlguiding Leicestershire, 97 Princess Road East, Leicester, LE1 7DW

Tel: 0116 254 5290

Fax: 0116 254 2587

Website: www.leicestershireguides.org

email: office@leicestershireguides.org

